

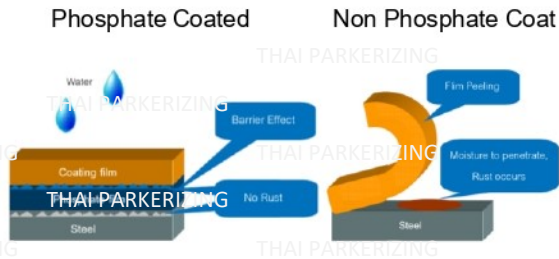
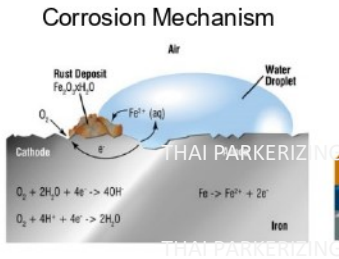
# PHOSPHATE COATING

ONE TYPE OF CONVERSION COATING

Conversion process that generate phosphate crystal or film layer on metal surface, providing various properties such as Anti-Corrosion, Adhesion, and Wear resistance.

## Phosphate process

- Also known as
- » **PARKERIZING**
  - » **PAKER**
  - » **BOND**
  - » **BONDERIZE**
  - » **LUBULITE**



Cross cut on material Test result

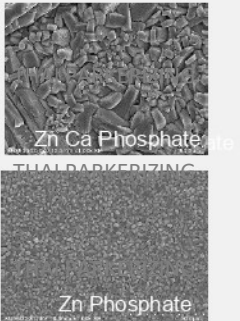


## ZINC PHOSPHATE

Zinc phosphate is an inorganic chemical compound consisting of zinc, phosphorous and to metallic surfaces oxygen with the chemical formula  $Zn_3(PO_4)_2$ .

It is commonly used as a corrosion inhibitor, paint adhesion and rubber adhesion when applied to metallic surfaces.

### Phosphate Crystal



### Characteristics

- » To Improve corrosion resistance.
- » Increase adhesion ability.

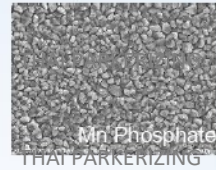
### Application



## MANGANESE PHOSPHATE

Manganese phosphate coating is most commonly used within engines, transmission systems and gear to improve adhesion, corrosion protection and wear resistance of material surface while having a low production cost.

### Phosphate Crystal



### Characteristics

- » To Improve wear resistance.
- » To improve corrosion resistance.
- » To increase oil absorb ability.

### Application



## ZINC PHOSPHATE AND LUBRICANT

Chemical Zinc phosphating is still the industrial standard for cold forming. Zinc phosphate is frequently used in conjunction with soap to form a lubrication layer in cold forging.



### Characteristics

- » Reduce Friction
- » Prevention metal contact with tools
- » Easy to mold release

### Application



## TRIVALENT CHROMATE / NON-CHROMATE

Trivalent chromate / Non chromate conversion coating for **aluminum** is used for passivate and convert the surface properties of the substrate by nano amorphous film. This coating provides outstanding conversion resistance and as a primer for paint, lacquer or rubber bonding. Moreover, our processing can provide for varieties size of product (Tank size : 1.8 x 2.2 x 1.2 meter )



### Characteristics

- » To improve Corrosion resistance
- » Increase adhesion ability

### Application

