

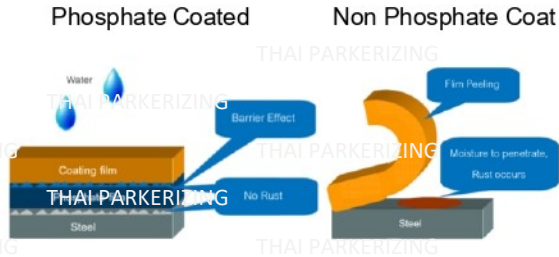
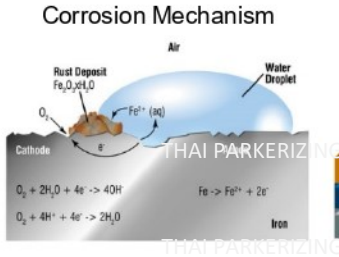
PHOSPHATE COATING

ONE TYPE OF CONVERSION COATING

Conversion process that generate phosphate crystal or film layer on metal surface, providing various properties such as Anti-Corrosion, Adhesion, and Wear resistance.

Phosphate process

- Also known as
- » **PARKERIZING**
 - » **PAKER**
 - » **BOND**
 - » **BONDERIZE**
 - » **LUBULITE**



Cross cut on material Test result

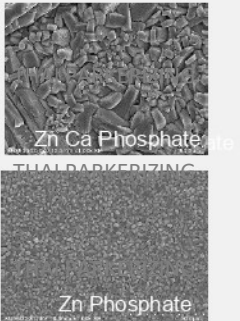


ZINC PHOSPHATE

Zinc phosphate is an inorganic chemical compound consisting of zinc, phosphorous and to metallic surfaces oxygen with the chemical formula $Zn_3(PO_4)_2$.

It is commonly used as a corrosion inhibitor, paint adhesion and rubber adhesion when applied to metallic surfaces.

Phosphate Crystal



Characteristics

- » To Improve corrosion resistance.
- » Increase adhesion ability.

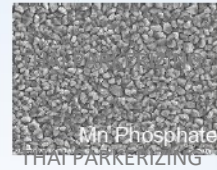
Application



MANGANESE PHOSPHATE

Manganese phosphate coating is most commonly used within engines, transmission systems and gear to improve adhesion, corrosion protection and wear resistance of material surface while having a low production cost.

Phosphate Crystal



Characteristics

- » To Improve wear resistance.
- » To improve corrosion resistance.
- » To increase oil absorb ability.

Application



ZINC PHOSPHATE AND LUBRICANT

Chemical Zinc phosphating is still the industrial standard for cold forming. Zinc phosphate is frequently used in conjunction with soap to form a lubrication layer in cold forging.



Characteristics

- » Reduce Friction
- » Prevention metal contact with tools
- » Easy to mold release

Application



TRIVALENT CHROMATE / NON-CHROMATE

Trivalent chromate / Non chromate conversion coating for **aluminum** is used for passivate and convert the surface properties of the substrate by nano amorphous film. This coating provides outstanding conversion resistance and as a primer for paint, lacquer or rubber bonding. Moreover, our processing can provide for varieties size of product (Tank size : 1.8 x 2.2 x 1.2 meter)



Application



Characteristics

- » To improve Corrosion resistance
- » Increase adhesion ability

